

DESIGNING & MANUFACTURING IN THE UK SINCE 1923



# P107

Next Generation  
LED Luminaire



This luminaire complies with ETL guidelines for White Light Emitting Diode Lighting Units and is eligible for the Enhanced Capital Allowance (ECA) scheme.



01920 860600  
[www.cuphosco.co.uk](http://www.cuphosco.co.uk)  
[enquiries@cuphosco.co.uk](mailto:enquiries@cuphosco.co.uk)



**INTRO**

P107 is a simple, classic Post Top LED Luminaire that has been designed for amenity lighting, minor roads, residential areas, shopping areas, squares, parks and car parks.

P107 utilises the latest LED light source achieving longevity for both LEDs and the drivers. The installation is simple and fast.



LUMINAIRE LUMINOUS FLUX	up to 3,770 lm
LUMINAIRE EFFICACY	up to 104 lm/W
LUMEN MAINTENANCE	L90 > 100,000 hrs (1000mA, Ta = 15°C)
PHOTOMETRIC OPTIONS	2 distributions

**KEY BENEFITS**

- Elegant and state-of-the-art-design
- Luminaire efficacy up to 104 lm/W
- Wide range of lumen packages
- Maximised savings on energy
- Minimal total cost of ownership
- Flexible and intelligent lighting control options
- IP54 ingress protection
- 100% recyclable

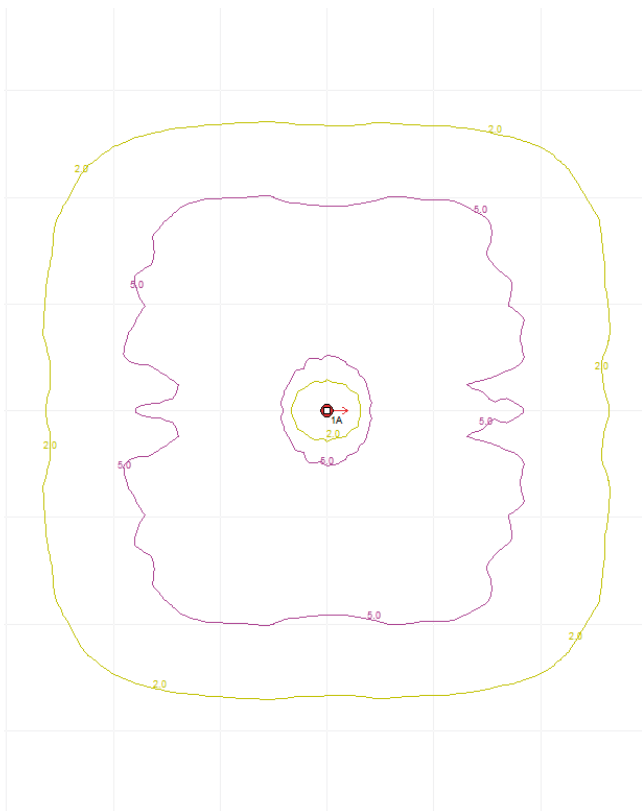
**EXCEPTIONAL OPTICAL PERFORMANCE**

Standard Neutral White LEDs ( CCT = 4000K )  
Optional Warm White LEDs ( CCT = 3000K )  
Colour Rendering Index > 70  
High quality PMMA lenses

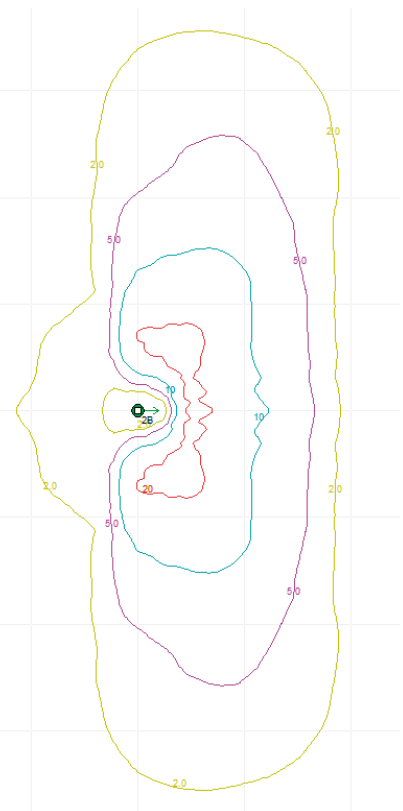


**OPTICAL DISTRIBUTIONS**

A2 for Area Lighting:



R2B for Road Lighting:



Light source	High Power LEDs
Number of LEDs	12
Power Consumption	10 ~ 40W
Luminaire Luminous Flux	950 ~ 3770 lm
Driver Current ( in 50mA steps )	200mA ~ 1000mA in 50mA steps
Lumen Maintenance Output ( Ta = 25°C )	L90F10 AT 100,000 hours (1000mA, Ta = 15°C )
Operating Temperature ( for 100,000 hrs )	-40°C to +25°C
Weight ( Total )	3.6kg
Correlated Colour Temperature	Neutral White 4000K ( 3000K optional )
Colour Rendering Index	> 70
Optical Cover	Polycarbonate cone
Electrical Class	I
Control System Input	DALI / 1-10V
Surge Protection	8 kV Com. Mode 6 kV Diff. Mode to IEC 61000-4-5; 10 kV Single Pulse
Dimming Control	Multi-step dimming
Lighting Regulation	Mini Photocell • CMS (contact for details)
Installation Height	4 ~ 6m
Installation	PT Ø 60-76mm
Material	Aluminium spigot and canopy • Polycarbonate body • Clear vandal resistant bowl
Finish	Polyester powder coat cured under heat
Colours	Black as standard, other RAL colours available on request
Ingress Protection	IP54
Wind Area ( EPA )	0.13m <sup>2</sup>

